

TYP F

FIXED POST BASES

OUTDOOR

Hot dip galvanizing for use in service classes 1, 2 and 3. Stainless steel A2 | AISI304 versions for excellent durability.

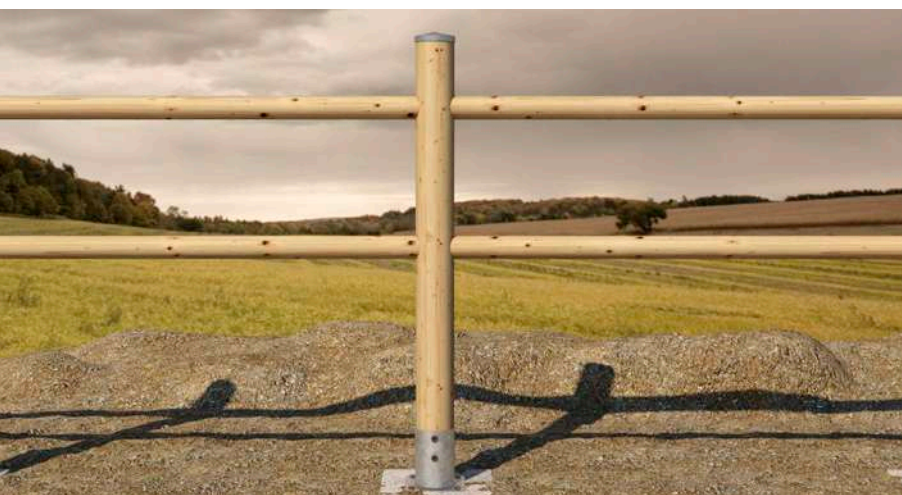
WATER OUTFLOW

Internal holes designed to allow the accumulated water to drain. Versions with integrated riser.



CHARACTERISTICS

| | |
|--------------|---------------------------------|
| FOCUS | fast installation |
| COLUMNS | from 70 x 70 mm to 200 x 200 mm |
| ROUND COLUMN | from Ø80 to Ø140 mm |
| FASTENERS | HBS PLATE EVO, SKR, VIN-FIX PRO |



MATERIAL

Hot dip bright zinc plated carbon steel or stainless steel three dimensional perforated plate.

FIELDS OF USE

Outdoor joints. Suitable for service class 1, 2 and 3. Construction of pergolas and fences.

F10

SLEEVE POST BASE

S235
HOT DIP

ETA 10/0422



CODES AND DIMENSIONS

| CODE | sleeve [mm] | height [mm] | thickness [mm] | bottom plate [mm] | base holes [n. x mm] | sleeve holes [n. x mm] | pcs |
|-------|----------------|----------------|-------------------|-------------------------|----------------------------|------------------------------|-----|
| F1070 | 71 x 71 | 150 | 2,0 | 150 x 150 | 4 x Ø11,5 | 4 x Ø11 | 1 |
| F1080 | 81 x 81 | 150 | 2,0 | 150 x 150 | 4 x Ø11,5 | 4 x Ø11 | 1 |
| F1090 | 91 x 91 | 150 | 2,0 | 150 x 150 | 4 x Ø11,5 | 4 x Ø11 | 1 |

F1080 not included in the ETA document.

F10 A2 | AISI304

SLEEVE POST BASE

A2
AISI 304

CE
ETA 10/0422



CODES AND DIMENSIONS

| CODE | sleeve [mm] | height [mm] | thickness [mm] | bottom plate [mm] | base holes [n. x mm] | sleeve holes [n. x mm] | pcs |
|--------|----------------|----------------|-------------------|-------------------------|----------------------------|------------------------------|-----|
| FI1070 | 71 x 71 | 150 | 2,0 | 150 x 150 | 4 x Ø11,5 | 4 x Ø11 | 1 |
| FI1090 | 91 x 91 | 150 | 2,0 | 150 x 150 | 4 x Ø11,5 | 4 x Ø11 | 1 |

F50

SLEEVE POST BASE



CODES AND DIMENSIONS

| CODE | sleeve [mm] | height [mm] | thickness [mm] | bottom plate [mm] | base holes [n. x mm] | sleeve holes [n. x mm] | pcs |
|--------|----------------|----------------|-------------------|-------------------------|----------------------------|------------------------------|-----|
| F50100 | 101 x 101 | 150 | 2,5 | 150 x 150 | 4 x Ø11,5 | 4 x Ø11 | 1 |
| F50120 | 121 x 121 | 150 | 2,5 | 200 x 200 | 4 x Ø11,5 | 4 x Ø11 | 1 |
| F50140 | 141 x 141 | 150 | 2,5 | 200 x 200 | 4 x Ø11,5 | 4 x Ø11 | 1 |
| F50160 | 161 x 161 | 200 | 2,5 | 240 x 240 | 4 x Ø11,5 | 4 x Ø11 | 1 |
| F50180 | 181 x 181 | 200 | 2,5 | 280 x 280 | 4 x Ø11,5 | 4 x Ø11 | 1 |
| F50200 | 201 x 201 | 200 | 2,5 | 300 x 300 | 4 x Ø11,5 | 4 x Ø11 | 1 |

FI50 A2 | AISI304

SLEEVE POST BASE



CODES AND DIMENSIONS

| CODE | sleeve [mm] | height [mm] | thickness [mm] | bottom plate [mm] | base holes [n. x mm] | sleeve holes [n. x mm] | pcs |
|---------|----------------|----------------|-------------------|-------------------------|----------------------------|------------------------------|-----|
| FI50100 | 101 x 101 | 150 | 2,5 | 150 x 150 | 4 x Ø11,5 | 4 x Ø11 | 1 |
| FI50120 | 121 x 121 | 150 | 2,5 | 200 x 200 | 4 x Ø11,5 | 4 x Ø11 | 1 |
| FI50140 | 141 x 141 | 150 | 2,5 | 200 x 200 | 4 x Ø11,5 | 4 x Ø11 | 1 |
| FI50160 | 161 x 161 | 200 | 2,5 | 240 x 240 | 4 x Ø11,5 | 4 x Ø11 | 1 |
| FI50200 | 201 x 201 | 200 | 2,5 | 300 x 300 | 4 x Ø11,5 | 4 x Ø11 | 1 |

FM50 COLOR

SLEEVE POST BASE

THERMO
DUST

S235
HOT DIP

ETA 10/0422



CODES AND DIMENSIONS

| CODE | sleeve [mm] | height [mm] | thickness [mm] | bottom plate [mm] | base holes [n. x mm] | sleeve holes [n. x mm] | pcs |
|---------|----------------|----------------|-------------------|-------------------------|----------------------------|------------------------------|-----|
| FM50100 | 101 x 101 | 150 | 2,5 | 150 x 150 | 4 x Ø11,5 | 4 x Ø11 | 1 |
| FM50120 | 121 x 121 | 150 | 2,5 | 200 x 200 | 4 x Ø11,5 | 4 x Ø11 | 1 |
| FM50160 | 161 x 161 | 200 | 2,5 | 240 x 240 | 4 x Ø11,5 | 4 x Ø11 | 1 |
| FM50200 | 201 x 201 | 200 | 2,5 | 300 x 300 | 4 x Ø11,5 | 4 x Ø11 | 1 |

Fastenings for timber and concrete included.

FR50 COLOR

SLEEVE POST BASE

THERMO
DUST

S235
HOT DIP

ETA 10/0422



CODES AND DIMENSIONS

| CODE | sleeve [mm] | height [mm] | thickness [mm] | bottom plate [mm] | base holes [n. x mm] | sleeve holes [n. x mm] | pcs |
|---------|----------------|----------------|-------------------|-------------------------|----------------------------|------------------------------|-----|
| FR50100 | 101 x 101 | 150 | 2,5 | 150 x 150 | 4 x Ø11,5 | 4 x Ø11 | 1 |
| FR50120 | 121 x 121 | 150 | 2,5 | 200 x 200 | 4 x Ø11,5 | 4 x Ø11 | 1 |

Fastenings for timber and concrete included.

F12

S235
HOT DIP

POST BASE WITH CONCEALED BASE



CODES AND DIMENSIONS

| CODE | base | height | thickness | base holes | wings holes | pcs |
|--------|-----------|--------|-----------|------------|-------------|-----|
| | [mm] | [mm] | [mm] | [n. x mm] | [n. x mm] | |
| F1270 | 72 x 60 | 100 | 2,5 | 4 x Ø8 | 4 x Ø11 | 1 |
| F1280 | 82 x 60 | 100 | 2,5 | 4 x Ø8 | 4 x Ø11 | 1 |
| F1290 | 92 x 70 | 120 | 2,5 | 4 x Ø8 | 4 x Ø11 | 1 |
| F12100 | 102 x 80 | 120 | 2,5 | 4 x Ø8 | 4 x Ø11 | 1 |
| F12120 | 122 x 100 | 140 | 2,5 | 4 x Ø8 | 4 x Ø11 | 1 |
| F12140 | 142 x 120 | 160 | 3,0 | 4 x Ø13 | 4 x Ø11 | 1 |
| F12160 | 162 x 140 | 180 | 3,0 | 4 x Ø13 | 4 x Ø11 | 1 |
| LIFT20 | 60 x 60 | 20 | 3,0 | - | - | 1 |

LIFT not included in the box.

F11

S235
HOT DIP

POST BASE WITH CONCEALED BASE



CODES AND DIMENSIONS

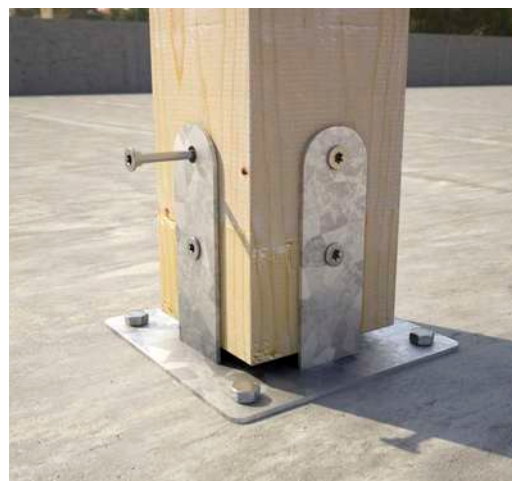
| CODE | sleeve | height | thickness | base holes | sleeve holes | pcs |
|--------|-----------|--------|-----------|------------|--------------|-----|
| | [mm] | [mm] | [mm] | [n. x mm] | [n. x mm] | |
| F1190 | 91 x 91 | 150 | 2,5 | 4 x Ø8 | 4 x Ø11 | 1 |
| F11100 | 101 x 101 | 150 | 2,5 | 4 x Ø8 | 4 x Ø11 | 1 |
| F11120 | 121 x 121 | 150 | 2,5 | 4 x Ø8 | 4 x Ø11 | 1 |
| F11140 | 141 x 141 | 200 | 3,0 | 4 x Ø13 | 4 x Ø11 | 1 |
| F11160 | 161 x 161 | 200 | 3,0 | 4 x Ø13 | 4 x Ø11 | 1 |
| LIFT20 | 60 x 60 | 20 | 3,0 | - | - | 1 |

LIFT not included in the box.

F51

S235
HOT DIP

POST BASE WITH FLANGES



CODES AND DIMENSIONS

| CODE | sleeve [mm] | height [mm] | thickness [mm] | bottom plate [mm] | base holes [n. x mm] | flange holes [n. x mm] | pcs |
|--------|----------------|----------------|-------------------|-------------------------|----------------------------|------------------------------|-----|
| F51120 | 121 x 121 | 150 | 3,0 | 187 x 187 | 4 x Ø11,5 | 8 x Ø11 | 1 |
| F51140 | 141 x 141 | 200 | 3,0 | 207 x 207 | 4 x Ø11,5 | 8 x Ø11 | 1 |
| F51160 | 161 x 161 | 200 | 4,0 | 227 x 227 | 4 x Ø13,0 | 8 x Ø11 | 1 |
| F51180 | 181 x 181 | 225 | 4,0 | 247 x 247 | 4 x Ø13,0 | 8 x Ø11 | 1 |
| F51200 | 201 x 201 | 225 | 4,0 | 267 x 267 | 4 x Ø13,0 | 8 x Ø11 | 1 |

F69

S235
HOT DIP

POST BASE WITH FLANGES



CODES AND DIMENSIONS

| CODE | sleeve [mm] | height [mm] | thickness [mm] | bottom plate [mm] | base holes [n. x mm] | flange holes [n. x mm] | pcs |
|--------|----------------|----------------|-------------------|-------------------------|----------------------------|------------------------------|-----|
| F69100 | 101 x 101 | 150 | 2,5 | 150 x 150 | 4 x Ø11,5 | 8 x Ø11 | 1 |
| F69120 | 121 x 121 | 150 | 2,5 | 200 x 200 | 4 x Ø11,5 | 8 x Ø11 | 1 |
| F69160 | 161 x 161 | 200 | 3,0 | 240 x 240 | 4 x Ø11,5 | 8 x Ø11 | 1 |
| F69200 | 201 x 201 | 220 | 3,0 | 300 x 300 | 4 x Ø11,5 | 8 x Ø11 | 1 |
| LIFT20 | 60 x 60 | 20 | 3,0 | - | - | - | 1 |

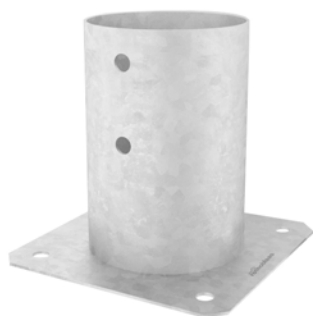
LIFT not included in the box.

F20

SLEEVE POST BASE

S235
HOT DIP

ETA 10/0422



CODES AND DIMENSIONS

| CODE | sleeve | height | thickness | bottom plate | base holes | sleeve holes | pcs |
|--------|--------|--------|-----------|--------------|------------|--------------|-----|
| | [mm] | [mm] | [mm] | [mm] | [n. x mm] | [n. x mm] | |
| F2080 | Ø81 | 150 | 2,0 | 160 x 160 | 4 x Ø11,5 | 4 x Ø11 | 1 |
| F20100 | Ø101 | 150 | 2,0 | 160 x 160 | 4 x Ø11,5 | 4 x Ø11 | 1 |
| F20120 | Ø121 | 150 | 2,0 | 180 x 180 | 4 x Ø11,5 | 4 x Ø11 | 1 |
| F20140 | Ø141 | 150 | 2,0 | 200 x 200 | 4 x Ø11,5 | 4 x Ø11 | 1 |

FR20 COLOR

SLEEVE POST BASE

THERMO
DUST

S235
HOT DIP

ETA 10/0422



CODES AND DIMENSIONS

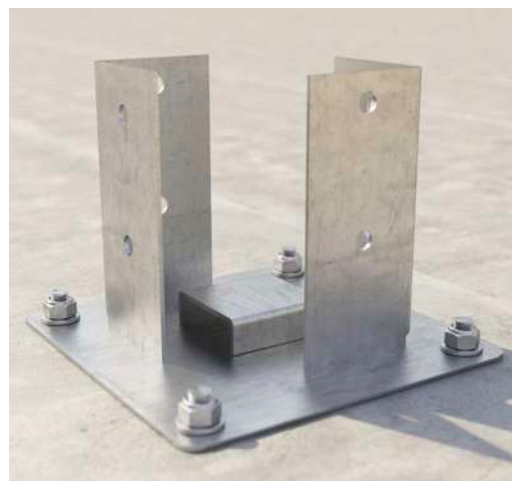
| CODE | sleeve | height | thickness | bottom plate | base holes | sleeve holes | pcs |
|---------|--------|--------|-----------|--------------|------------|--------------|-----|
| | [mm] | [mm] | [mm] | [mm] | [n. x mm] | [n. x mm] | |
| FR20100 | Ø101 | 150 | 2,0 | 160 x 160 | 4 x Ø11,5 | 4 x Ø11 | 1 |
| FR20120 | Ø121 | 150 | 2,0 | 180 x 180 | 4 x Ø11,5 | 4 x Ø11 | 1 |

Fastenings for timber and concrete included.

LIFT

S235
HOT DIP

RISER FOR POST BASES



CODES AND DIMENSIONS

| CODE | type | width [mm] | height [mm] | thickness [mm] | depth [mm] | pcs |
|--------|----------|---------------|----------------|-------------------|---------------|-----|
| LIFT20 | STANDOFF | 60 | 20 | 3,0 | 60 | 1 |

HUT

S235
HOT DIP

CAPS FOR POST BASES



CODES AND DIMENSIONS

| CODE | size [mm] | height [mm] | pcs |
|-----------|--------------|----------------|-----|
| 1 HUTS70 | 70 x 70 | 20 | 10 |
| 1 HUTS90 | 90 x 90 | 20 | 10 |
| 1 HUTS100 | 100 x 100 | 20 | 10 |
| 1 HUTS120 | 120 x 120 | 20 | 10 |
| 2 HUTR80 | Ø80 | 20 | 10 |
| 2 HUTR100 | Ø100 | 20 | 10 |
| 2 HUTR120 | Ø120 | 20 | 10 |